



*'Thriving and learning as we build God's Kingdom'*



# Welcome to St. John's C.E. Primary School Early Years





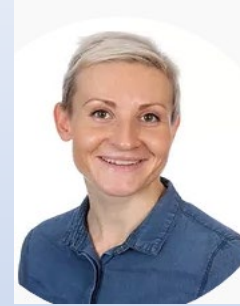
# The Early Years Team



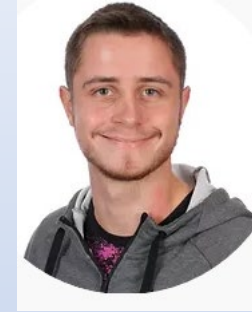
Mrs Pat Creed  
Foundation Stage  
Leader & Class Teacher



Ms Elena Dall'Aglio  
Early Years Teaching  
Assistant



Mrs Sylwia Hocyk  
Teaching Assistant



Mr Matt Pople  
Sports Coach



Mrs Sue Notley  
Headteacher



Mr Joe Law  
Deputy Head



# Introduction to our Early Years Foundation Stage at John's C. E. School.



We have a very unique Early Years Foundation Stage at St. Johns where we incorporate the Nursery and Reception classes together in our Ruby Class. The Reception children attend in the mornings and are joined in the afternoon by the Nursery children. This enables the children to be taught in smaller groups than in a larger primary school. The younger children joining us in the Nursery will be with us in Ruby Class for two years which helps to support a smooth transition into Reception; working with staff they know and within a familiar environment. Working within a wider age group gives all the children the opportunity to access learning and activities which suit their individual needs, encouraging them to aspire and achieve and also to demonstrate empathy, tolerance and caring towards each other.







# EYFS Curriculum



The Early Years Foundation Stage curriculum (EYFS) sets the standard that all Early Years providers must meet to ensure that children learn and develop and are kept healthy and safe. It promotes teaching and learning to ensure school readiness and gives the children the broad range of skills, knowledge and experiences that provide the right foundation for future progress through school and life.

At St John's the children have the opportunity to initiate their own learning and through careful observation we are able to recognise and plan for their next steps and extend their learning accordingly. As the year progresses, for both Nursery and Reception children, we begin to extend their experiences to ensure they are ready to embrace and access the next stage of their learning journey whether it be in Reception or Key Stage One.





# Areas of Learning and Development



In our Early Years Foundation Stage, we provide many opportunities for children to learn through adult led focus sessions and child initiated activities.

At St John's we understand the importance of learning through play. We provide the children with an enriching environment to support them in all areas of their development, taking account of the children's interests and the way they learn. The children have the opportunity to independently learn, explore, develop and enhance their skills within an exciting setting.





# The Characteristics of Effective Learning



At St John's C. E. School we acknowledge that each child is a unique child and has their own interests and individual learning styles - characteristics of learning. We encourage the children to develop these characteristics which will support them within all areas of their learning.

The three characteristics of effective learning are:

Playing and exploring - children have the opportunity to investigate and experience a range of activities and are encouraged to 'have a go'

Active learning - children concentrate and develop resilience when they encounter difficulties, and enjoy their achievements

Creating and thinking critically - children have and develop their own ideas, make links between ideas, and develop strategies for completing tasks





# Early Years Foundation Stage Curriculum (EYFS)



The Nursery and Reception children follow the Early Years Foundation Stage Curriculum (EYFS). This is organised into prime and specific areas of learning, supported by the child's individual characteristics of learning and is delivered in a cross curricular approach supported by the children's own interests.

## Prime areas -

Communication and Language

Physical Development

Personal, Social & Emotional Development

## Specific areas -

Maths

Literacy

Understanding the World

Expressive Arts and Design





# Starting Nursery



The children will begin Nursery in small groups to allow them time to settle in and feel secure in their new environment.

We welcome parents and carers into the classroom and invite you to stay for as long as is necessary for your child to feel settled.

The nursery is run as an afternoon session from 12.30 p.m. - 3.00 p.m.

We will always work with you to help your child to settle and will speak to you if we feel your child would benefit from a shorter session based on their individual needs.







# Nursery Afternoon



	Monday	Tuesday	Wednesday	Thursday	Friday
12.15 - 12.45	Self-registration and busy fingers	Self-registration and busy fingers	Self-registration and busy fingers	Self-registration and busy fingers	Self-registration and busy fingers
12.45 - 1.00	News and maths - carpet session	News and maths - carpet session	Music and maths - carpet session	Understanding the World and maths - carpet session	News and maths - carpet session
1.00 - 1.40	CIL	CIL	CIL	CIL	CIL
1.40 - 1.55	Phonics	Phonics	Phonics	Phonics	Phonics
1.55 - 2.40	CIL	CIL	CIL	CIL	CIL
2.40 - 3.00	Story time End of Day Prayer Home Time	Story time End of Day Prayer Home Time	Story time End of Day Prayer Home Time	Story time End of Day Prayer Home Time	Story time End of Day Prayer Home Time
* Rolling snack available throughout the afternoon			*CIL - Child Initiated Learning - covering all areas of learning		



# Starting Reception



We settle the children into Reception over a period of a week. This enables the children to become familiar with new routines, their new friends and if new to the Early Years, to also get to know the staff.

For the first two days we invite you into school to have lunch with your child. This gives you the opportunity to meet the school chef and the Lunchtime Supervisor who will be supporting your child at lunch times. The children will go home after lunch.

The following day the children will be supported at lunch time by the LSA, the class teacher and teaching assistant and will spend time in our Early Years lunchtime playground (Catriona's garden) before going home at 1.15 p.m.

The next day will be the children's first full day at school 8.50 a.m. - 3.00 p.m.

We will always work with you to help your child to settle and will speak to you if we feel your child would benefit from shorter sessions to begin with based on their individual needs.



# Reception School Day



Reception Timetable					
	Monday	Tuesday	Wednesday	Thursday	Friday
8.50 - 9.20	Self-registration Collective Worship	Self-registration Busy fingers	Self-registration Collective Worship	Self-registration Book changing with parents	Self-registration Achievement assembly
9.20 - 9.40	Literacy carpet session	Literacy carpet session	Literacy carpet session	PSHE carpet session	Literacy carpet session
9.40 - 10.30	Literacy focus activities and CIL	Literacy focus activities and CIL	Literacy focus activities and CIL	Computer/PSHE activities and CIL	Literacy focus activities and CIL
10.30 - 10.50	Phonics Carpet Session				
10.50 - 11.30	Phonics focus and CIL	Phonics focus and CIL	Phonics focus and CIL Music	Phonics focus and CIL	Understanding The World R.E.
11.30 - 12.45	Lunchtime Prayer and Lunch				
12.45 - 1.05	Maths carpet session	Maths carpet session	Maths carpet session	Maths carpet session	Maths carpet session
1.05 - 2.40	Maths focus activities and CIL	P.E.	Maths focus activities and CIL	Maths focus activities and CIL	Maths focus activities and CIL
2.40 - 3.00	Story time/sharing End of the Day Prayer Home Time	Story time/sharing End of the Day Prayer Home Time	Story time/sharing End of the Day Prayer Home Time	Story time/sharing End of the Day Prayer Home Time	Story time/sharing End of the Day Prayer Home Time
* Rolling snack available throughout the day			* CIL - Child Initiated Learning - covering all areas of learning		





# Supporting your child at home



We actively encourage home and school links beginning with our home visits which gives you and your child the opportunity to get to know the Early Years' staff in an environment where your child feels safe and comfortable. This establishes the link between home and school and working together to support your child's education and wellbeing. We regularly invite parents and carers into the class room to take part in workshops alongside the children, this enables us all to share ideas and strategies of learning which will help to support your child at home and at school.

We really value what you do at home with the children and have a 'WOW' wall in the classroom; the children can bring in work from home and we celebrate as a whole class. We encourage the children to develop a love of books and to support this both the Nursery and Reception children will bring home a book which they have chosen to share with you twice a week. On Thursdays we would like to invite you to come into Ruby Class to change your child's book with them; you are always welcome to stay a little longer and share a story with us too.



# St John The Baptist Church



We are linked to St John The Baptist Church and throughout the school year we visit the church regularly to worship and participate in festival services.

Father Peter Godden is a regular visitor to our school, leading acts of worship and assemblies and working with children within the classrooms and in bible study groups.

The Reception class make a special trip to the church where Father Peter shows us around the church and he also visits us in Ruby class to share in our celebrations of Harvest, Advent, Christmas and Easter.





# Thank you for visiting our website



We hope you have found this power point informative. If you have any questions please email the school office and we will answer your email as soon as possible.



Please refer to the school website for details of school uniform for the Nursery and Reception children. We also have own online school shop which sells some items of uniform and other resources.

[office@stjohnsprimarysch.org.uk](mailto:office@stjohnsprimarysch.org.uk)